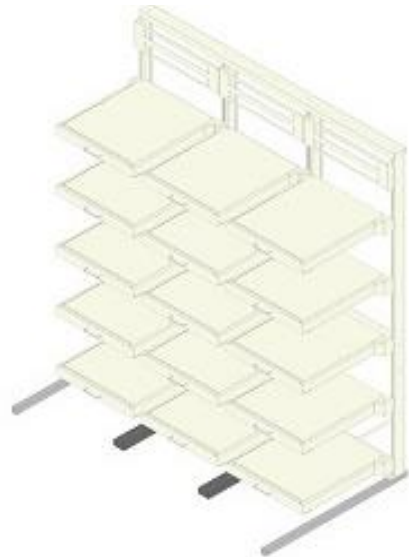




Server Rack Options



Customizable Modular Workstation and Server Rack Solutions

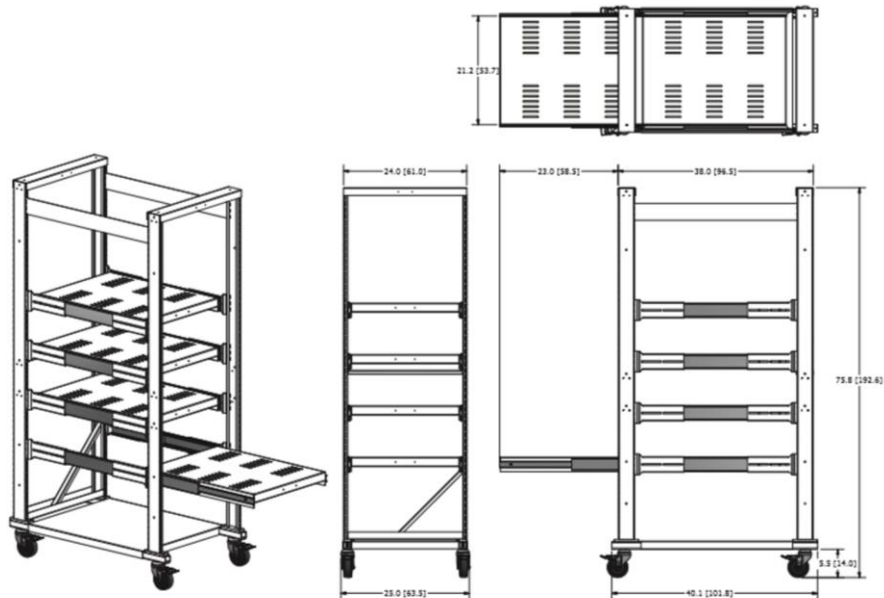
THS by Summit Manufacturing Inc., Hillsboro, Oregon; 503.649.2033, THSbySummitMfg.com, November 2018

SR Options 1

Part #	Description
Hybrid Server Racks	
THS-1M-SR-HY-28X24	24" Module Hybrid Server Rack - free standing; frame only
THS-1M-SR-HY-28X24-C	24" Module Hybrid Server Rack w/ Casters; frame only
THS-S-HySR-28X24	Shelf - Hybrid Server Rack fixed shelves 24" wide x 28" deep
THS-FS-Hy-24	Floor Shelf - 24" THS Hybrid Server Rack
THS-SRS-Hy-28X24	28" x 24" Hybrid Server Rack Slideout Shelf - 28" depth, 24" width
Heavy Duty Server Racks	
THS-SRHD-27X36X88	Heavy Duty Server Rack 27" x 36" x 88"; 4 Locking Pullout Shelves
THS-SRHD-30X36X88	Heavy Duty Server Rack 30" x 36" x 88"; 4 Locking Pullout Shelves
THS-SRSHD-34X42X95	Super Heavy Duty Server Rack 34" x 42"x 95"; 4 Locking Pullout Shelves
Custom Configurations	
THS-Open Server Rack	

HYBRID SERVER RACKS

THS Hybrid Server Racks are portable, configurable and designed to easily integrate with THS modular workstations. Built to accommodate an individual or small workspace up to and including large factory environments. This THS product, crafted with the help of direct customer feedback and collaboration, provides solutions to help optimize workspaces and accelerate productivity.



Customizable Modular Workstation and Server Rack Solutions

THS by Summit Manufacturing Inc., Hillsboro, Oregon; 503.649.2033, THSbySummitMfg.com, November 2018

SR Options 2

THS Server Racks - Heavy Duty and Super Heavy Duty

THS 27 Server Rack Heavy Duty

THS-SRHD-27x36x88

Heavy Duty THS Server Rack 27" x 36" x 88", with four locking slide-out shelves. Each shelf has a 380 lb. weight capacity at full extension. Shipped fully assembled.

THS 30 Server Rack Heavy Duty

THS-SRHD-30x36x88

Heavy Duty THS Server Rack 30" x 36" x 88", with four locking slide-out shelves. Each shelf has a 380 lb. weight capacity at full extension. Shipped fully assembled

THS 34 Server Rack Super Heavy Duty

THS-SRSHD-34x42x95

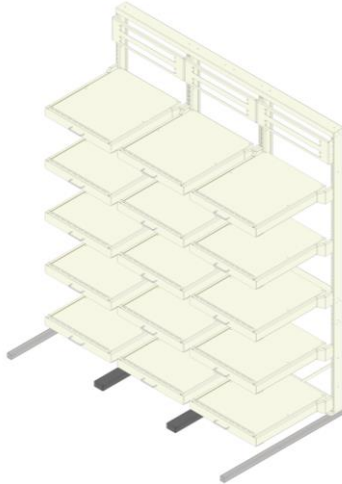
Super Heavy Duty THS Server Rack 34" x 42" x 95", with four locking slide-out shelves. Each shelf has a 500 lb. capacity at full extension. Shipped fully assembled.



Customizable Modular Workstation and Server Rack Solutions

THS by Summit Manufacturing Inc., Hillsboro, Oregon; 503.649.2033, THSbySummitMfg.com, November 2018

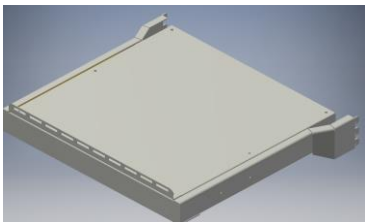
SR Options 3



THS Open Server Rack Concept

- 1) This THS Open Server Rack pictured above is 82" in height, has three 24" module with fifteen 24" deep by 24" wide pull-out shelves with restraint brackets.
- 2) Besides the 24" modules, we also have module widths of 30", 36" and 48". Open Server Rack can also come in a 72" in height which would have less number of shelves due to capacity.
- 3) These THS Open Server Rack Units can easily be ganged together (Assemble one, two, three or more modules together side-to-side) to create a complete main frame unit(s).
- 4) Some of our customers use our 24" Module Double 1U Brackets to accommodate both the power strip and the data comm connections.
- 5) The weight capacity of the total unit (and for seismic purposes) requires that the system be bolted to the floor. We are assuming that these THS Open Server Racks will be mounted with Z-Brackets to a concrete floor. If this is not the case, you will need to discuss with your facilities manager how you will securely tie them down. Summit Manufacturing recommends that only 2-3 shelves be pulled to full extension at any given time.

Example of shelves used with Open Server Rack configuration:



Customizable Modular Workstation and Server Rack Solutions

THS by Summit Manufacturing Inc., Hillsboro, Oregon; 503.649.2033, THSbySummitMfg.com, November 2018

SR Options 4



Drop by - Give us a call - Visit our website

Also Available Upon Request:

Master Product List

THS Introduction

Quick Ship Options

24" Modules & Integrated Accessories

30" Modules & Integrated Accessories

36" Modules & Integrated Accessories

48" Modules & Integrated Accessories

Sit/Stand Workstation Options

THS Accessories

THS Workstation Components

Additional Information



Customizable Modular Workstation and Server Rack Solutions

THS by Summit Manufacturing Inc., Hillsboro, Oregon; 503.649.2033, THSbySummitMfg.com, November 2018

SR Options 5